

# MEET HOLLIE BONIFACE

## HOW WOULD YOU DESCRIBE YOURSELF IN A SENTENCE?

I'm a joyful woman who loves to have fun and wonder at the world.

## HOW LONG HAVE YOU BEEN PART OF THE CPN?

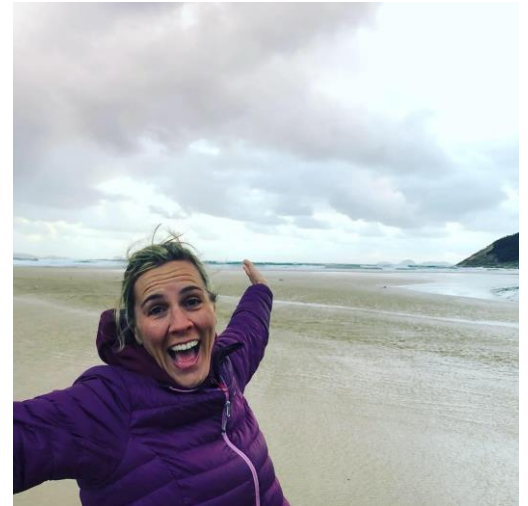
I think our church (St Mark's Anglican Church in Emerald, Vic) has been a member for 10+ years, I've been on the CPN team for 1 year now and loving it!

## WHAT ROLE DO YOU PLAY ON THE CPN TEAM ?

Vice president. Fancy name but no responsibilities unless Ruth takes leave...

## WHAT I LOVE ABOUT PLAYGROUP MINISTRY IS ....

Play! There aren't many places that are specifically dedicated to children's play and I love that we can make such a special space for them. The connection that happens when families can enter that space and be blessed in it is a bonus..



## DURING THE WEEK I .....

Try to walk every day. I live in the Dandenong Ranges and it's uplifting to have some time in nature.

## MY FAMILY CONSISTS OF ....

My husband Mick, 1 teen son and two tween daughters (sympathy anyone!)  
2 Cats, Molly and Frankie  
and my "ladies" 4 chooks that think they should live inside too.

## I AM CURRENTLY READING .....

Sacred Companions by David Benner  
A challenging and encouraging book about friendship and spiritual direction  
But I just finished the Rosie Project trilogy by Graeme Simsion, that was funny.

## WHAT DO YOU LOVE DOING?

Drinking tea.  
Black, chai, herbal and T2 Melbourne Breakfast on weekends.

## WHAT DO YOUR FRIENDS SAY ABOUT YOU?

Good things I hope!

Would like to connect with Hollie? Contact her on 0401 276 955 or [hollie.boniface@stmarksemerald.org.au](mailto:hollie.boniface@stmarksemerald.org.au)